

### SAFE-D mobile D-Stop tests can:

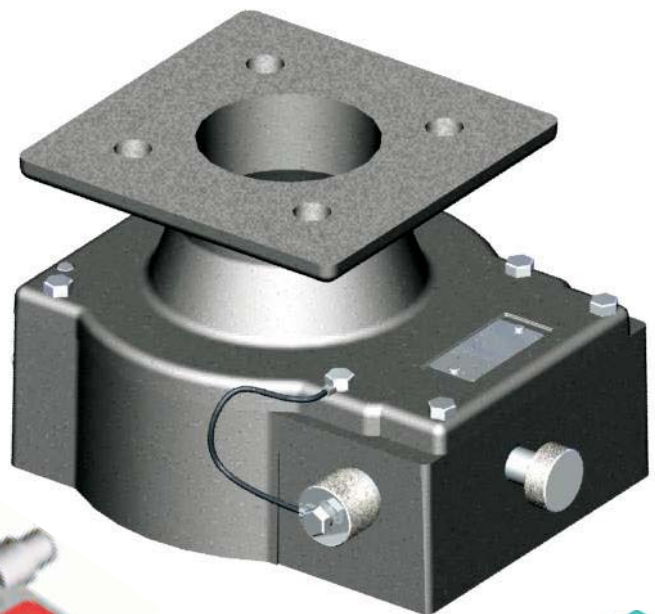
- Enable the continued productivity of the plant
- Records the result of the partial stroke test
- Know that the checks are being completed correctly.
- Provides reports and graphs of all previous D-Stop inspections for analysis.

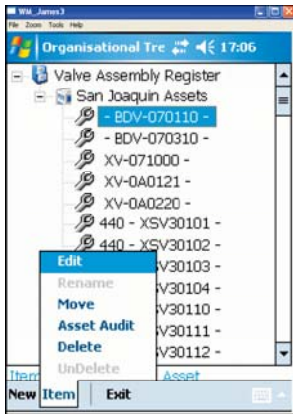


## For Your D-Stop Emergency Shutdown (ESD or XD) Valve Tests

**SAFE-D** solution operates on a handheld device and is designed for performing all of your vital D-stop tests. Completely mobile **SAFE-D** can be used in any area of your site. By using RFID Tags **SAFE-D** will ensure that the operator is positioned at the correct valve to test. A second RFID Tag ensures that the correct D-Stop key is used. On-screen prompts record the result of the test with a further check that the key has been removed on completion of the test. The in-built scheduling system means that tests will be performed at recommended intervals.

Results are written to the database which provides reports showing failure identification and trends. The use of this software controlled process in conjunction with the simplicity and efficiency of the D-Stop PSD will ensure your process continues to operate 24 x 7.



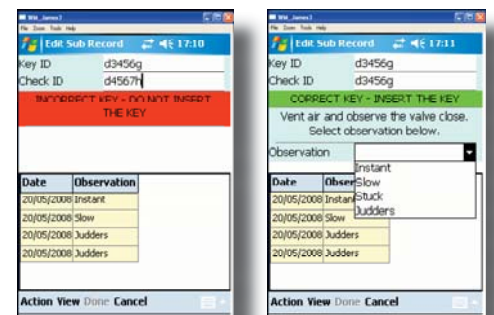


## Valve Assembly Identification

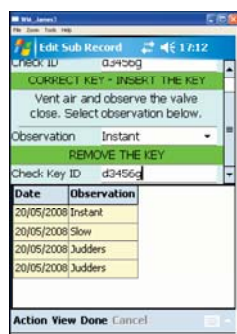
Each valve assembly has a uniquely numbered Low Frequency RFID tag attached. Designed especially for the Oil and Gas environment these ATEX /UL certified tags will withstand the extreme environments often present. The Tag is read by the mobile device to access the record for exact valve being tested.

## D-Stop Key Identification

Each D-Stop key also has its own RFID Tag. This prevents the wrong key from being used on the wrong Valve Assembly. Upon the correct key being scanned the instructions for the operation of the D-Stop partial Stroking Device are displayed. These can be customised to show as many instruction and observation details as is required. The results of previous observations are shown.



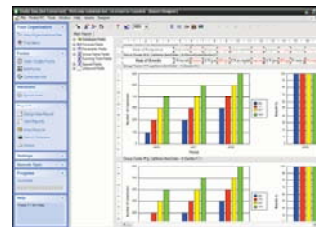
## D-Stop Key Confirmed Removal



The key cannot be scanned whilst inserted into the D-Stop PSD and the observation cannot be saved without scanning the key. This effectively enforces the removal of the key immediately the test is complete restoring the valve to full emergency shutdown capability.



## Test reports & Graphs Analysis



Each observation is held in the central data base from which reports and graphs can show trends by individual valve or line.

## All the Support you need

**SAFE-D** comes with a raft of supporting services, including consultancy and training—to ensure the system meets your needs and that you understand it. We will customise it for your organisation and set up the system ready for use. Backing this all up is excellent customer support by email or phone, a host of accessories and upgrades to software .



For more information on **SAFE-D** email  
sales@realtimedc.com or call +44 1243 790500

