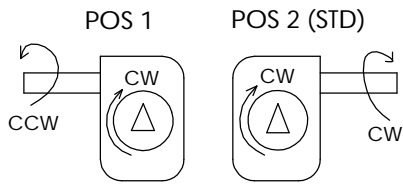


CONSULT FACTORY FOR SPECIAL CONFIGURATIONS.



SPRING HANDLE LOCKS UNIT IN ENGAGED OR DISENGAGED POSITION.
GREASED FOR LIFE.
PLATED STANDARD SHAFT.

MAX DRIVER BORE & KEY	
MAX IN LINE	MAX
Ø 1.000 .250 X .188 KEY	Ø 1.250 .375 X .250 KEY

HANDWHEEL
RECOMMENDED Ø: 14 IN
RIM PULL AT
MAX TORQUE: 77 LBS
TURNS FOR 90°: 12

RATIO: 48:1
TORQUE: 7,000 IN LBS
[791 N-M]
TEMPERATURE: -20° TO 150°F
[-29° TO 66°C]
WEIGHT
UNIT: 18 LBS [8.2 KG]
DRIVER: 5 LBS [2.3 KG]
HANDWHEEL: 5 LBS [2.3 KG]

HOUSING MOUNTING PATTERN

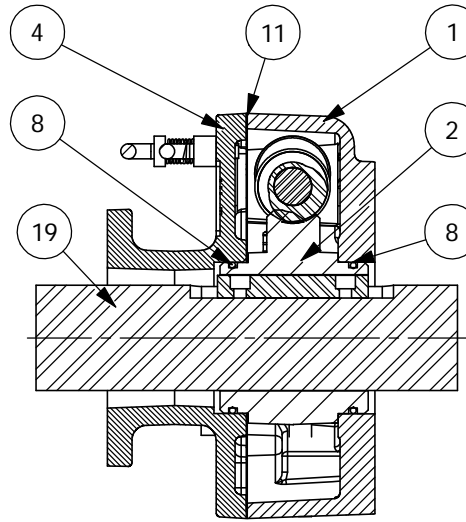
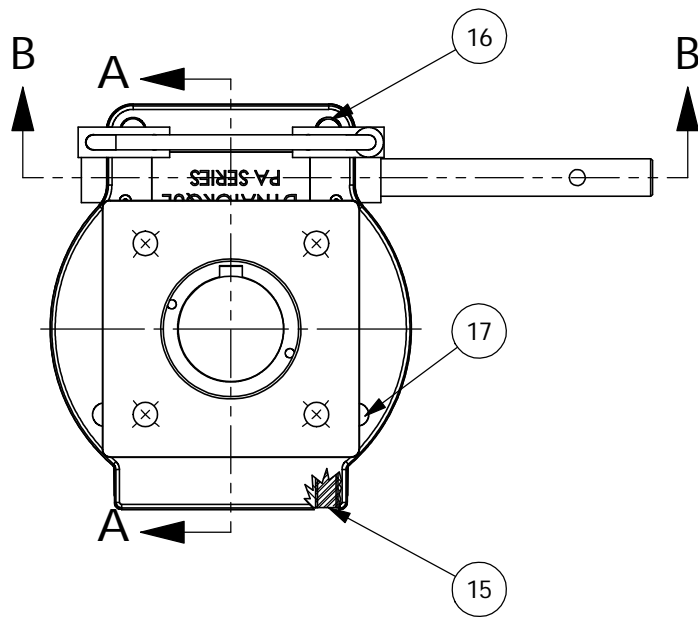
COVER MOUNTING PATTERN

**MANUAL 1/4 TURN ACTUATOR
COMMERCIAL GRADE**

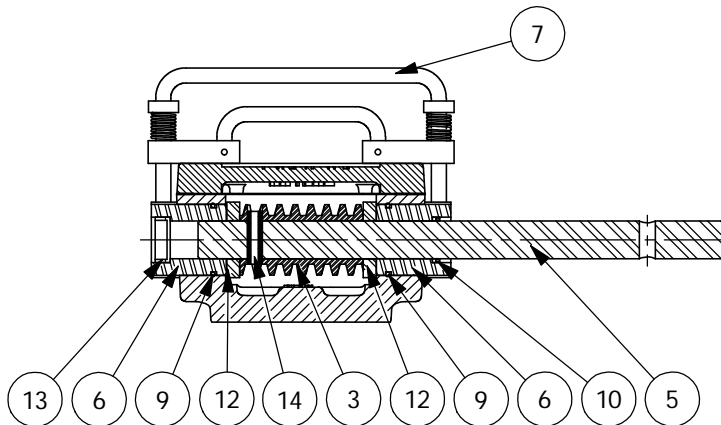
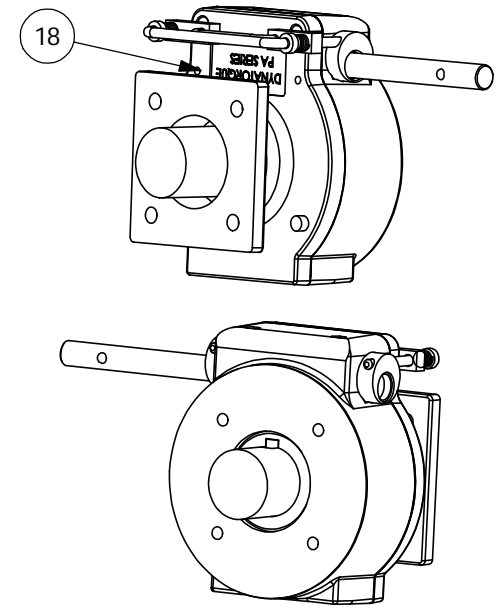
MAX	MAX ON CENTER	STD	MIN	MAX	MAX ON CENTER	STD	MIN
Ø 5.000 1/2-13	Ø 5.000 1/2-13	Ø 4.016 3/8-16	Ø 3.250 3/8-16	Ø 5.000 Ø .562	Ø 3.750 Ø .562	Ø 4.016 Ø .406	Ø 3.750 Ø .438

DYNATORQUE
WWW.DYNATORQUE.COM

**DT7
SD**



SECTION A-A



SECTION B-B

- 20 HWRR 14" HANDWHEEL NOT SHOWN.
- 21 UNIT BEARINGS, ORINGS AND GEAR TEETH ARE GREASED.
- 22 UNIT HAS BLACK E-COAT.

ITEM	QTY.	DESCRIPTION	ITEM	QTY.	DESCRIPTION
1	1	HOUSING, DT7SD	14	1	COIL PIN,.250,.88
2	1	W/WHEEL,DT7	15	2	SET SCREW, 3/8-16, 2.25
3	1	WORM, DT7	16	2	SHCS, 1/4-20 X .50
4	1	COVER DT7SD	17	2	SHCS, 1/4-20 X .87
5	1	SHAFT,DT3/7,G=7.00,.266	18	2	DOWEL PIN,.188,.50
6	2	DECL BUSHING,DT7SD	19	1	DR SRD,DT7
7	1	DECLUTCH HANDLE, DT7SD, SS	20	1	HWRR 14"
8	2	O-RING,2-141	21	1	GREASE, COMMERCIAL GRADE
9	2	O-RING,2-021	22	1	BLACK E-COAT
10	1	LIP SEAL,5/8	DYNATORQUE WWW.DYNATORQUE.COM		
11	1	GASKET, DT7, BUNA-N			
12	2	SPACER			
13	1	EXP. PLUG,.75,.25,SS			

**DT7
SD**