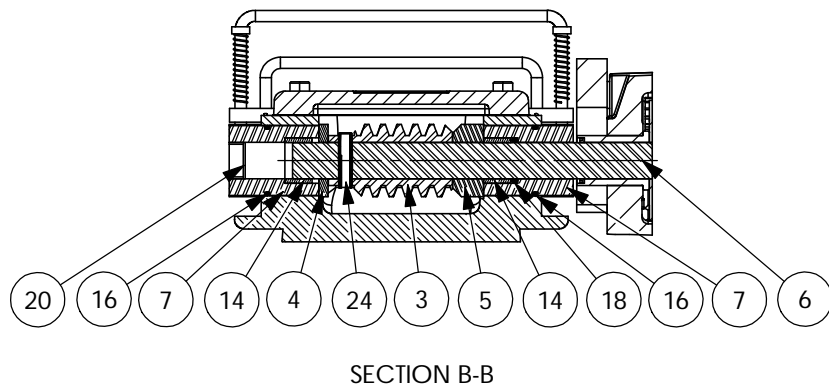
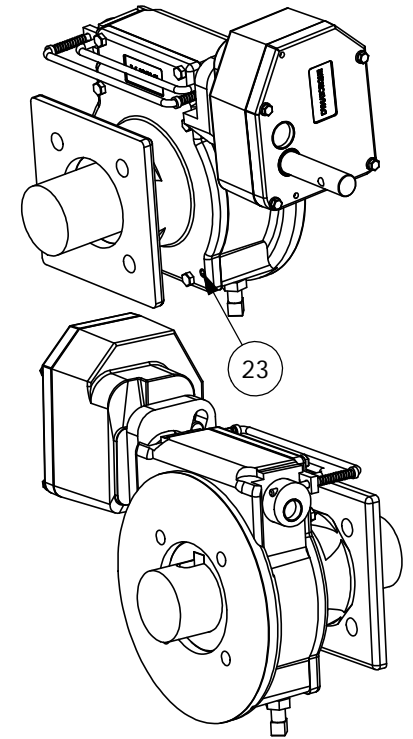
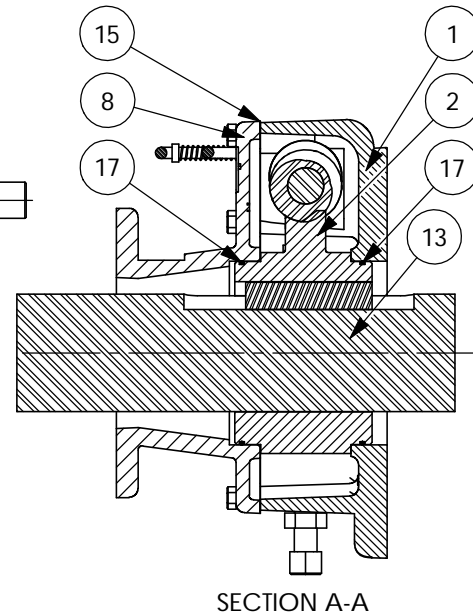
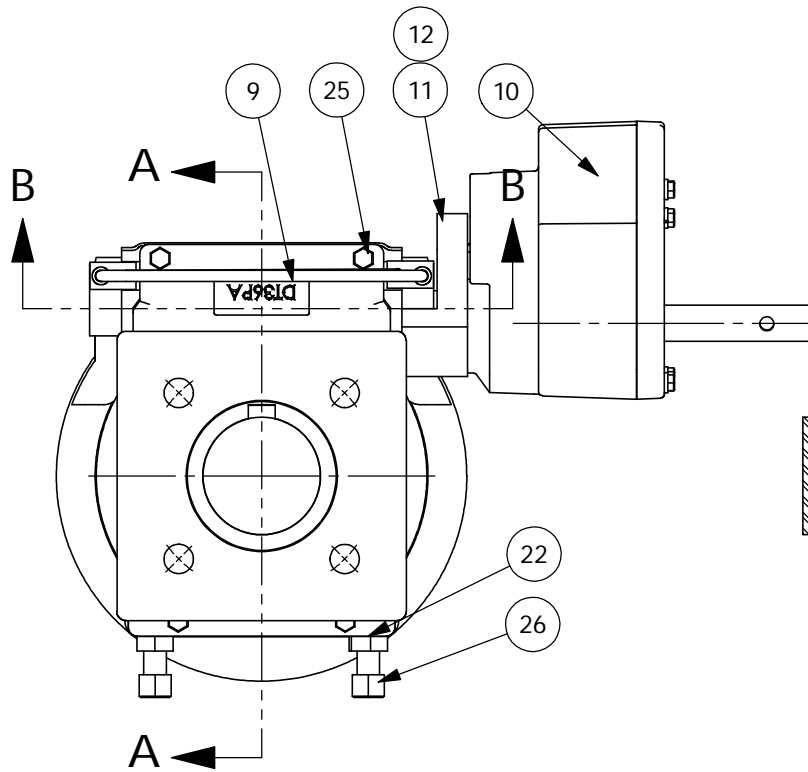


CONSULT FACTORY FOR SPECIAL CONFIGURATIONS.

<p>POS 1</p> <p>POS 2 (STD)</p>	<p>SPRING HANDLE LOCKS UNIT IN ENGAGED OR DISENGAGED POSITION.</p> <p>UNIT SHOWN IN ENGAGED POSITION.</p> <p>GREASED FOR LIFE.</p> <p>PLATED STANDARD SHAFT.</p>	MAX DRIVER BORE & KEY		HANDWHEEL	<p>RATIO: 318:1</p> <p>TORQUE: 63,000 IN LBS [71196 N-M]</p> <p>TEMPERATURE: -20° TO 150°F [-29° TO 66°C]</p> <p>WEIGHT UNIT: 125 LBS [56.8 KG]</p> <p>DRIVER: 28 LBS [12.7 KG]</p> <p>HANDWHEEL: 10 LBS [4.5 KG]</p>
		MAX IN LINE	MAX		
		$\phi 1.875$ 1.00 X .750 KEY	$\phi 2.500$.750 X .500 KEY	RIM PULL AT MAX TORQUE: 81 LBS	URNS FOR 90°: 79.5

HOUSING MOUNTING PATTERN				COVER MOUNTING PATTERN				MANUAL 1/4 TURN ACTUATOR COMMERCIAL GRADE	
MAX	MAX ON CENTER	STD	MIN	MAX	MAX ON CENTER	STD	MIN	DYNATORQUE	DT54 SD
$\phi 10.250$ 3/4-10 UNC	$\phi 10.250$ 3/4-10 UNC	$\phi 6.496$ 3/4-10 UNC	$\phi 6.000$ 1/2-13 UNC	$\phi 10.000$ $\phi .688$	$\phi 7.188$ $\phi .812$	$\phi 6.496$ $\phi .812$	$\phi 6.000$ $\phi .563$		



SECTION B-B

- 19 UNIT BEARINGS, O-RINGS AND GEAR TEETH ARE GREASED.
- 27 HWRR 36" HANDWHEEL NOT SHOWN.
- 28 UNIT IS PAINTED BLACK OXIDE.

ITEM	QTY.	DESCRIPTION	ITEM	QTY.	DESCRIPTION
1	1	HOUSING, DT36	18	1	O-RING, 2-214
2	1	W/WHEEL, DT36	19	1	GREASE, COMMERCIAL GRADE
3	1	WORM, DT36	20	1	EXPANSION PLUG, 1.00, .25
4	1	WORM SPACER	21	4	PLASTIC PLUG FOR SHIPPING
5	1	WORM SPACER	22	2	NUT, JAM, 5/8-11
6	1	SHAFT, DT50/54SD	23	2	DOWEL PIN, .375, 1.00
7	2	DECLUTCH BUSHING, DT36SD	24	1	COIL PIN, .375, 1.50
8	1	COVER, DT36SD	25	6	HHCS, 3/8-16 X 1.25 LG
9	1	DECLUTCH HANDLE, DT36SD, SS	26	2	SHSS, 5/8-11 X 4.00
10	1	SPUR, 6:1, SD	27	1	HWRR 36"
11	1	BRACKET, SPUR, SD	28	1	PAINT, PRIMER, BLACK OXIDE
12	3	SHCS, 3/8-16 X 1.75 LG			
13	1	DR SD, DT36, BLANK			
14	2	BEARING SLV, 1.25, 1.00, .75			
15	1	GASKET, DT36			
16	2	O-RING, 2-133			
17	2	O-RING, 2-157			

DYNATORQUE DT54
 WWW.DYNATORQUE.COM SD
 7/25/06