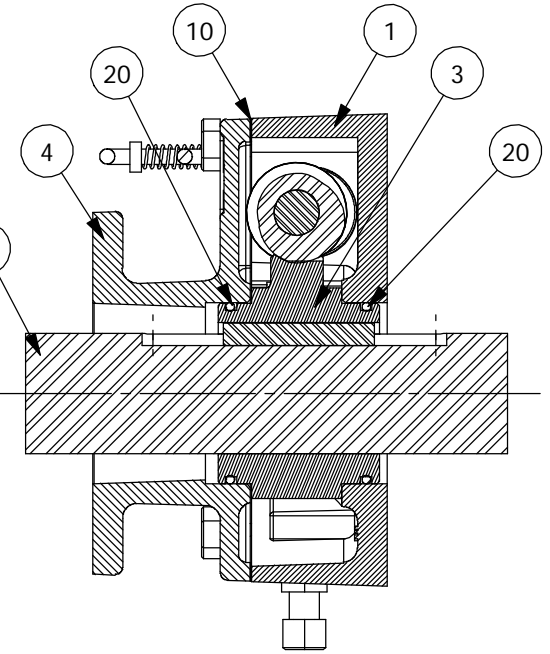
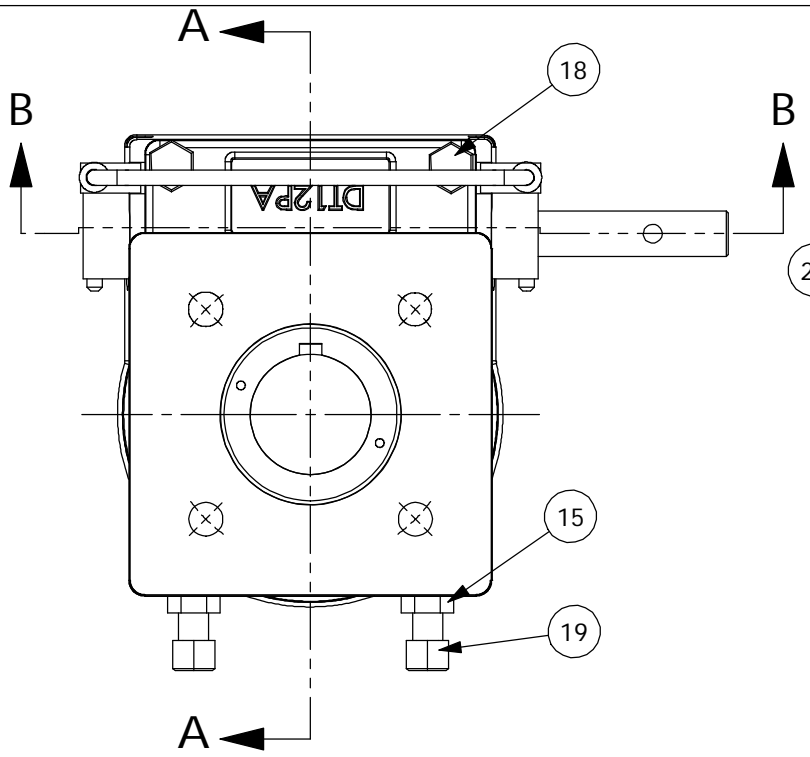


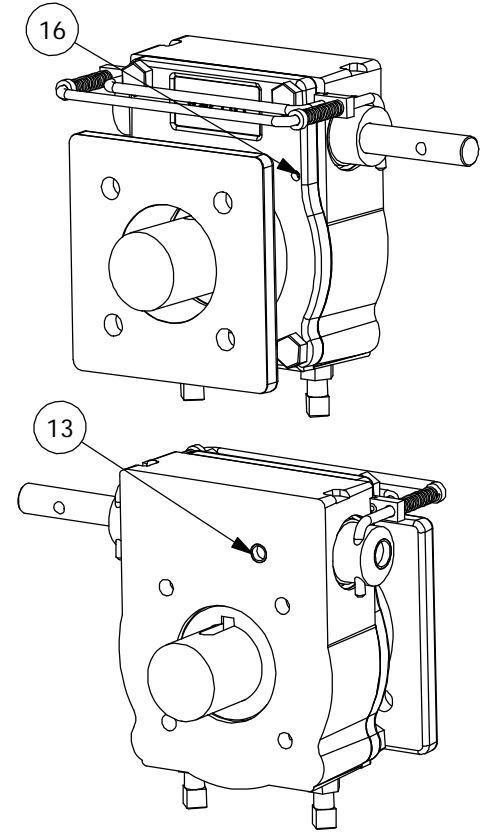
CONSULT FACTORY FOR SPECIAL CONFIGURATIONS.

	POS 1 POS 2 (STD)	SPRING HANDLE LOCKS UNIT IN ENGAGED OR DISENGAGED POSITION. UNIT SHOWN IN ENGAGED POSITION. GREASED FOR LIFE. PLATED STANDARD SHAFT.	MAX DRIVER BORE & KEY		HANDWHEEL RECOMMENDED ϕ : 18 IN RIM PULL AT MAX TORQUE: 95 LBS TURNS FOR 90°: 14.25	RATIO: 57:1 TORQUE: 12,000 IN LBS [1356 N-M] TEMPERATURE: -20° TO 150°F [-29° TO 66°C] WEIGHT UNIT: 31 LBS [14.1 KG] DRIVER: 7 LBS [3.2 KG] HANDWHEEL: 7 LBS [3.2 KG]
			MAX IN LINE	MAX		
			$\phi 1.250$.250 X .188 KEY	$\phi 1.500$.375 X .250 KEY		

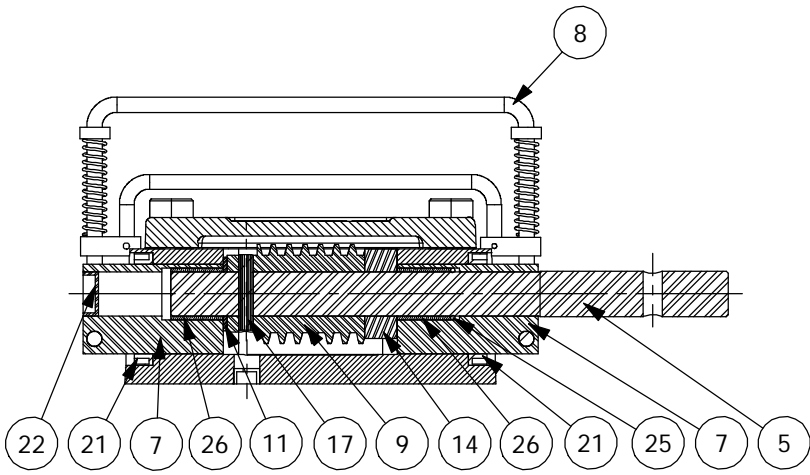
HOUSING MOUNTING PATTERN				COVER MOUNTING PATTERN				MANUAL 1/4 TURN ACTUATOR COMMERCIAL GRADE DYNATORQUE DT12 SD 1934 E. SHERMAN MUSKEGON, MI 49444-1824 (231) 739-1377 FAX (231) 739-4514 WWW.DYNATORQUE.COM	
MAX	MAX ON CENTER	STD	MIN	MAX	MAX ON CENTER	STD	MIN		
$\phi 6.496$ 3/4-10	$\phi 5.250$ 1/2-13	$\phi 4.921$ 1/2-13	$\phi 3.750$ 3/8-16	$\phi 6.496$ $\phi .812$	$\phi 5.375$ $\phi .688$	$\phi 4.921$ $\phi .562$	$\phi 4.750$ $\phi .562$		



SECTION A-A



- 6 UNIT IS PAINTED BLACK OXIDE.
- 12 UNIT BEARINGS, O-RINGS AND GEAR TEETH ARE GREASED.
- 23 HWCR 18" HANDWHEEL NOT SHOWN.



SECTION B-B

ITEM	QTY.	DESCRIPTION	ITEM	QTY.	DESCRIPTION
1	1	HOUSING, DT12SD	17	1	COIL PIN,.313,1.25
2	4	PLASTIC PLUG FOR SHIPPING	18	4	HHCS, 1/2-13 X 1.00 LG
3	1	W/WHEEL, DT12	19	2	SHSS, 1/2-13 X 3.00
4	1	COVER, DT12SD	20	2	O-RING,2-232
5	1	SHAFT, DT12SD/21SD, STD	21	2	LIP SEAL, 1.5
6	1	BLACK OXIDE	22	1	EXPANSION PLUG,.750,.25
7	2	DECLUTCH BUSHING, DT12/21SD, SS	23	1	HWRR 18"
8	1	DECLUTCH HANDLE, DT12SD	24	1	DR SD, DT12
9	1	WORM, DT12SD	25	1	O-RING,2-018
10	1	COVER GASKET, DT12	26	2	BEARING SLV,.875,.750,.88
11	1	THRUST WASHER,.750,.062	DYNATORQUE 1934 EAST SHERMAN MUSKEGON, MI 49444-1824 (231) 739-1377 FAX (231) 739-4514 WWW.DYNATORQUE.COM		
12	1	GREASE, COMMERCIAL GRADE			
13	1	EXPANSION PLUG,.468,.250			
14	1	SPACER			
15	2	NUT,JAM,1/2-13			
16	2	DOWEL PIN,.250,.75			

**DT12
SD**