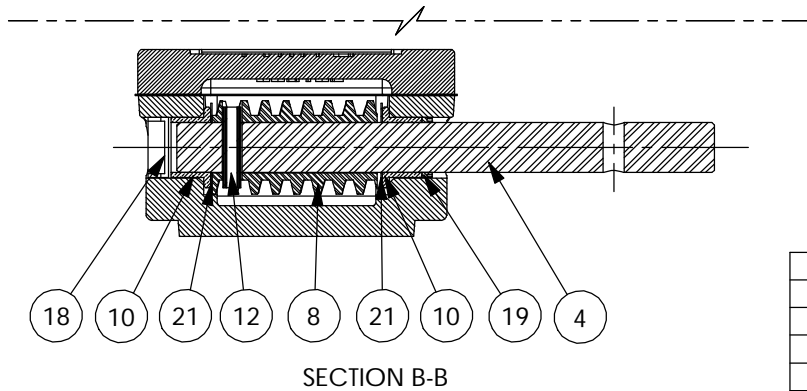
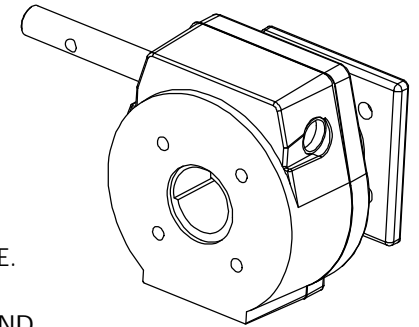
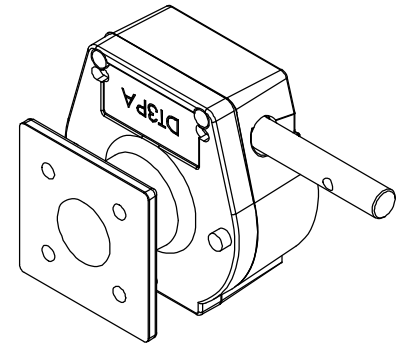
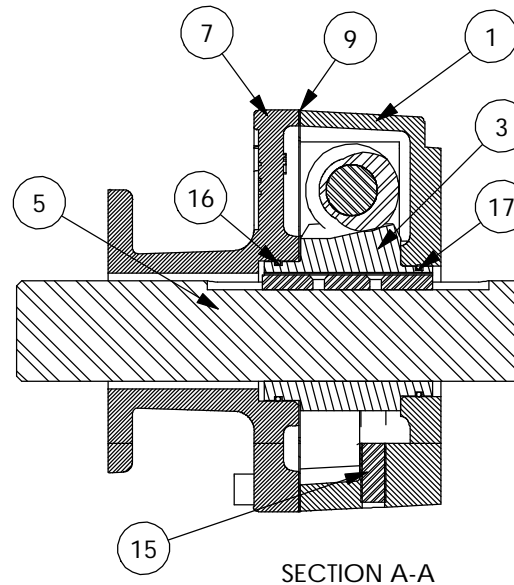
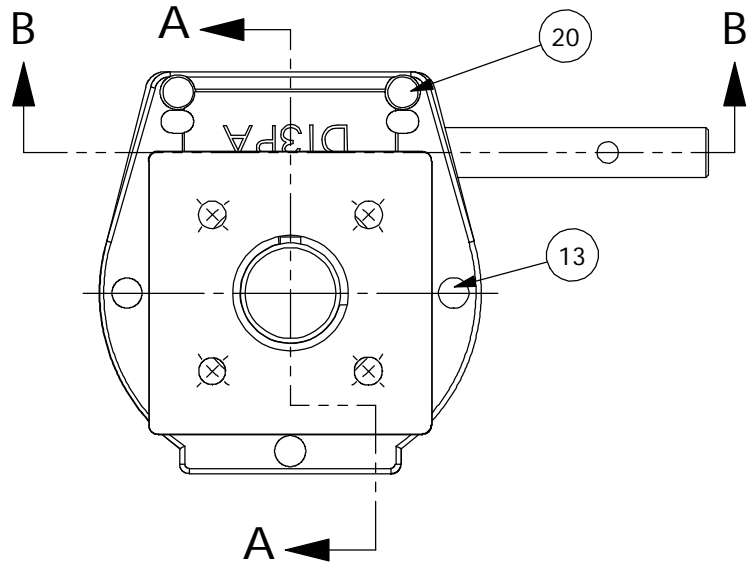


CONSULT FACTORY FOR SPECIAL CONFIGURATIONS.

	POS 1 POS 2 (STD)	UNITS ARE AVAILABLE IN FAIL CLOCKWISE OR FAIL COUNTERCLOCKWISE, UNIT SHOWN IN HOME POSITION FOR FAIL CLOCKWISE. GREASED FOR LIFE. PLATED STANDARD SHAFT.	MAX DRIVER BORE & KEY		HANDWHEEL RECOMMENDED ϕ : 10 IN RIM PULL AT MAX TORQUE: 74 LBS TURNS FOR 90°: 7.5	RATIO: 30:1 TORQUE: 3,000 IN LBS [342 N-M] TEMPERATURE: -20° TO 150°F [-29° TO 66°C] WEIGHT UNIT: 10 LBS [4.5 KG] DRIVER: 2 LBS [.9 KG] HANDWHEEL: 7 LBS [3.2 KG]
			MAX IN LINE	MAX		
			$\phi .750$.188 X .125 KEY	$\phi .875$.250 X .188 KEY		

HOUSING MOUNTING PATTERN				COVER MOUNTING PATTERN				MANUAL 1/4 TURN ACTUATOR COMMERCIAL GRADE	
MAX	MAX ON CENTER	STD	MIN	MAX	MAX ON CENTER	STD	MIN	DYNATORQUE	DT3 SRD
$\phi 4.016$ 3/8-16	$\phi 3.750$ 3/8-16	$\phi 2.756$ 5/16-18	$\phi 1.968$ 1/4-20	$\phi 4.250$ $\phi .406$	$\phi 3.125$ $\phi .344$	$\phi 2.756$ $\phi .344$	$\phi 2.756$ $\phi .344$		

42-22XX PAGE 1 OF 2 4/15/04



- 6 UNIT PAINTED BLACK OXIDE.
- 11 UNIT BEARINGS, O-RINGS AND GEAR TEETH ARE GREASED.
- 14 HWCR 10" HANDWHEEL NOT SHOWN.

ITEM	QTY.	DESCRIPTION	ITEM	QTY.	DESCRIPTION
1	1	HOUSING,DT3	14	1	HWCR 10"
2	4	PLASTIC PLUG FOR SHIPPING	15	2	SET SCREW, 5/16-18
3	1	W/WHEEL,DT3SRD	16	1	O-RING,2-028
4	1	SHAFT,DT3/7,G=5.25,.266	17	1	O-RING,2-028
5	1	DR SRD,DT3, BLANK	18	1	EXPANSION PLUG,.750,.25
6	1	BLACK OXIDE	19	1	LIP SEAL,5/8
7	1	COVER,DT3SD	20	2	SHCS, 1/4-20 X .62
8	1	WORM, DT2/3/5	21	2	THRUST WASHER,.625,.031
9	1	GASKET, COVER, DT3	DYNATORQUE 1934 EAST SHERMAN MUSKEGON, MI 49444-1824 (231) 739-1377 FAX (231) 739-4514 WWW.DYNATORQUE.COM		
10	2	BEARING,FLANGED,.750,.625,.50			
11	1	GREASE, COMMERCIAL GRADE			
12	1	COIL PIN,.250,1.00			
13	3	SHCS, 1/4-20 X .87			
		DT3 SRD			